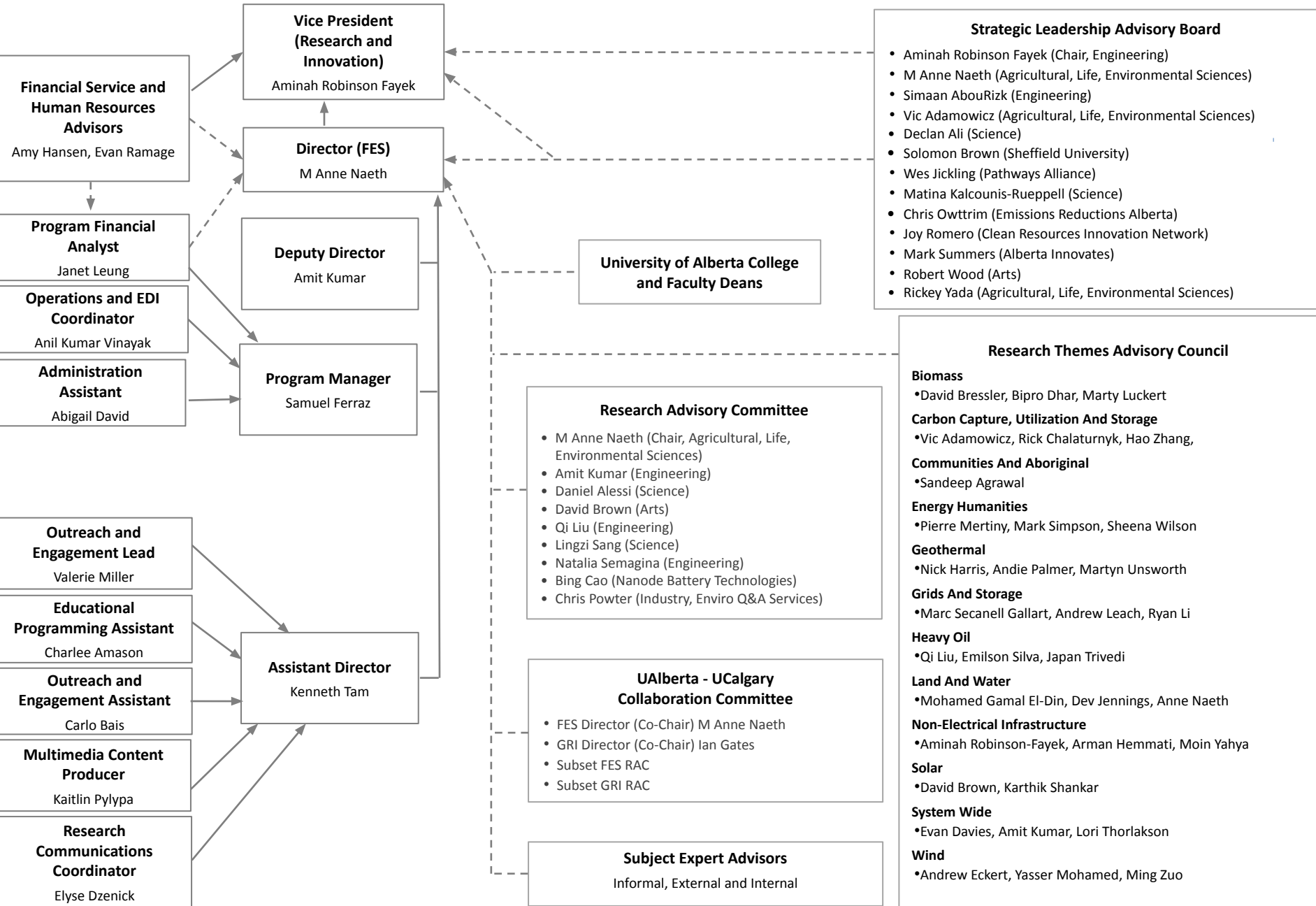


# FUTURE ENERGY SYSTEMS – ORGANIZATIONAL STRUCTURE – February 2025



## Strategic Leadership Advisory Board

- Aminah Robinson Fayek (Chair, Engineering)
- M Anne Naeth (Agricultural, Life, Environmental Sciences)
- Simaan AbouRizk (Engineering)
- Vic Adamowicz (Agricultural, Life, Environmental Sciences)
- Declan Ali (Science)
- Solomon Brown (Sheffield University)
- Wes Jickling (Pathways Alliance)
- Matina Kalcounis-Rueppell (Science)
- Chris Owtrim (Emissions Reductions Alberta)
- Joy Romero (Clean Resources Innovation Network)
- Mark Summers (Alberta Innovates)
- Robert Wood (Arts)
- Rickey Yada (Agricultural, Life, Environmental Sciences)

## University of Alberta College and Faculty Deans

## Research Themes Advisory Council

- Biomass**
  - David Bressler, Bipro Dhar, Marty Luckert
- Carbon Capture, Utilization And Storage**
  - Vic Adamowicz, Rick Chalaturnyk, Hao Zhang,
- Communities And Aboriginal**
  - Sandeep Agrawal
- Energy Humanities**
  - Pierre Mertiny, Mark Simpson, Sheena Wilson
- Geothermal**
  - Nick Harris, Andie Palmer, Martyn Unsworth
- Grids And Storage**
  - Marc Secanell Gallart, Andrew Leach, Ryan Li
- Heavy Oil**
  - Qi Liu, Emilson Silva, Japan Trivedi
- Land And Water**
  - Mohamed Gamal El-Din, Dev Jennings, Anne Naeth
- Non-Electrical Infrastructure**
  - Aminah Robinson-Fayek, Arman Hemmati, Moin Yahya
- Solar**
  - David Brown, Karthik Shankar
- System Wide**
  - Evan Davies, Amit Kumar, Lori Thorlakson
- Wind**
  - Andrew Eckert, Yasser Mohamed, Ming Zuo

## Research Advisory Committee

- M Anne Naeth (Chair, Agricultural, Life, Environmental Sciences)
- Amit Kumar (Engineering)
- Daniel Alessi (Science)
- David Brown (Arts)
- Qi Liu (Engineering)
- Lingzi Sang (Science)
- Natalia Semagina (Engineering)
- Bing Cao (Nanode Battery Technologies)
- Chris Powter (Industry, Enviro Q&A Services)

## UAlberta - UCalgary Collaboration Committee

- FES Director (Co-Chair) M Anne Naeth
- GRI Director (Co-Chair) Ian Gates
- Subset FES RAC
- Subset GRI RAC

## Subject Expert Advisors

Informal, External and Internal